



Ohrmarke: DE09.88543317

Geboren am: 20.08.2017

54,37 % Tajima, 31,25% Shimane, 8,13% Itozakura, 6,25% Kedaka

Erbfehlerfrei

# GWG1721 Ms Haruki II

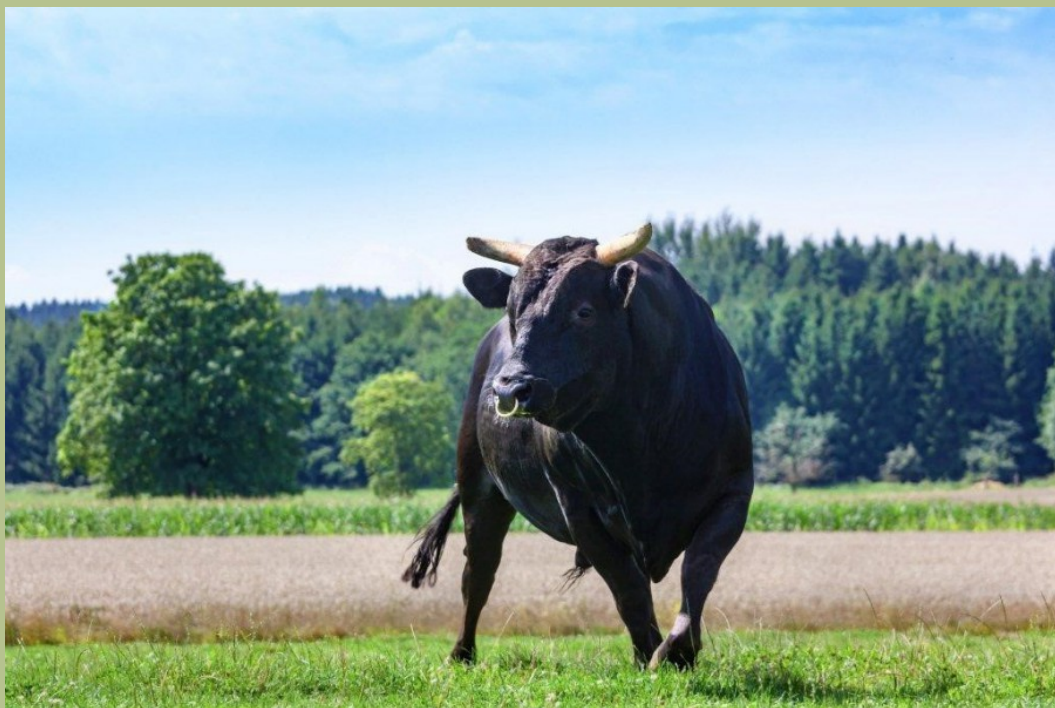


Foto: GWG1202 Haruki II (Vater von GWG1721 Ms Haruki II)

## ♀ GWG1721 Ms Haruki II

♂	Asayaske Shinnen	World K's Haruki - FB1614	Monjiro 11550	
			Sakura 2	
		Amanogawa	Fukutsuru 068	
	GWG1202 Haruki II	Soraya		JVP Ms Kikushige
			Westholme Teruyamanami	Kikateruyasudoï
				Masako
♀	Blackmore Kinuyasudoï Y350	Sayako	Kikuhana	
			Tsukubane 2	
			Terungadoï	
	GWG1514z Ms Kinuyasudoï	GWG1004 Ms Itoshigefuji		Yoshimi 3
				Kikuyasu 400
			Blackmore Kinu T077	Kinu 1
GWG1004 Ms Itoshigefuji	Chiyotake A126		JVP Fukutsuru 068	
			Aizaturudoï Y398	
			Aizakura U100	
			Itoshigefuji TF147	
			Chiyotake	